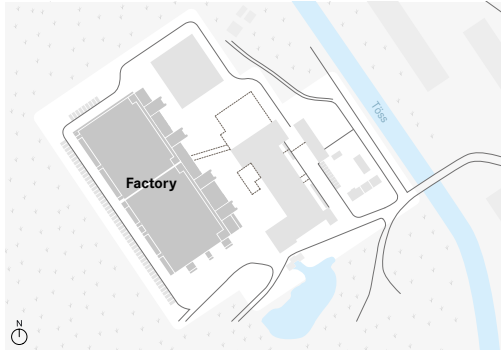


FACTORY

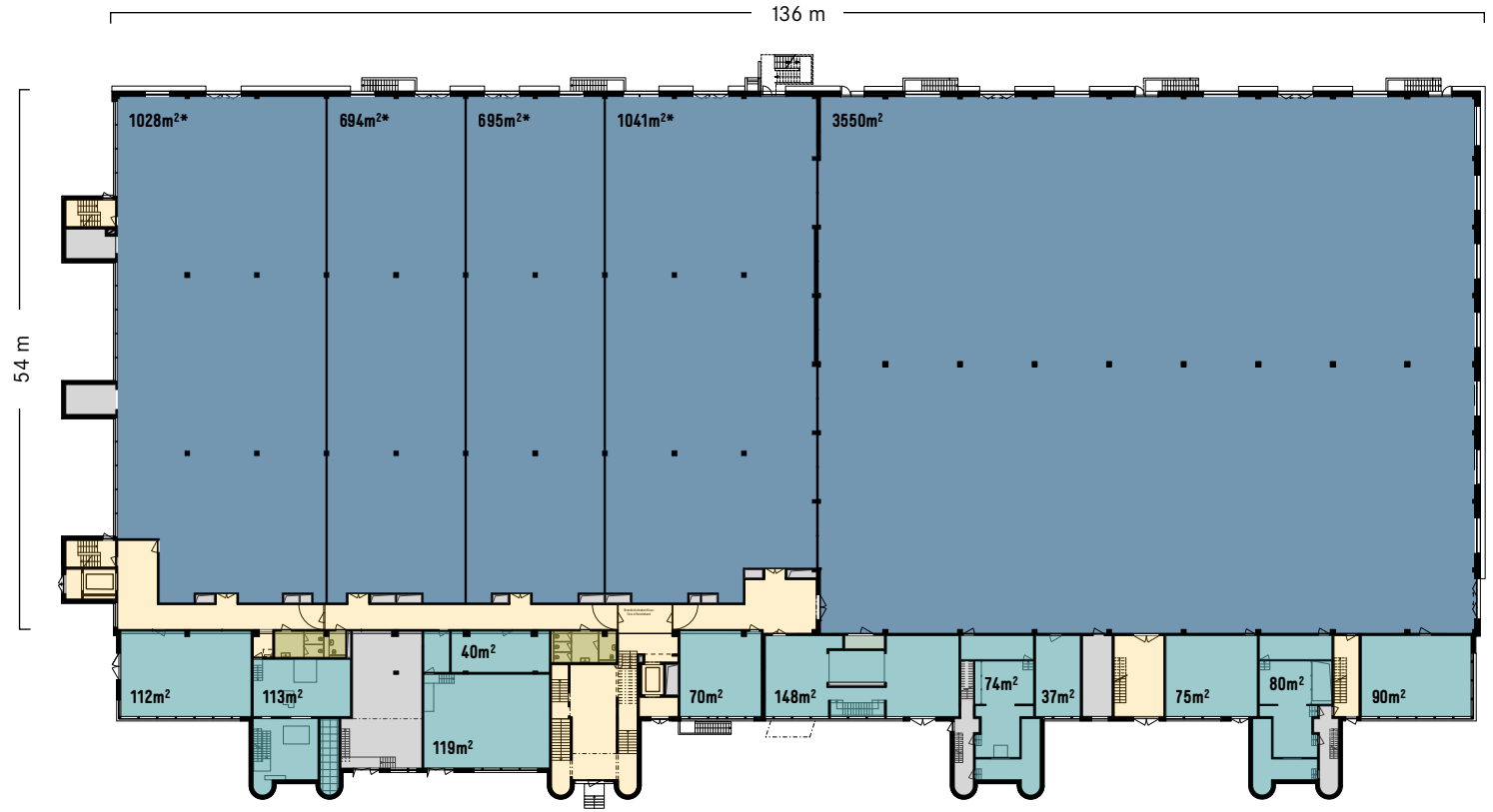
Ground floor

BÜHLERAREAL



| | |
|------------------------------|-------------------------|
| Hall surface area: | 6800 m ² |
| Hall ceiling height: | 5.5 m |
| Office/studios surface area: | 1000 m ² |
| Temperature: | up to 21° |
| Logistics zone: | over 100 parking spaces |

- Direct ground-level access from the inner courtyard and the logistics zone
- Meeting rooms, lounge area and roof terrace for common use on upper floor
- Partial spaces from 700 m² available



- Rented
- Rental area: halls
- Rental area: service wing
- Common use
- Vertical + horizontal connectors
- WCs + closets
- Technical rooms

